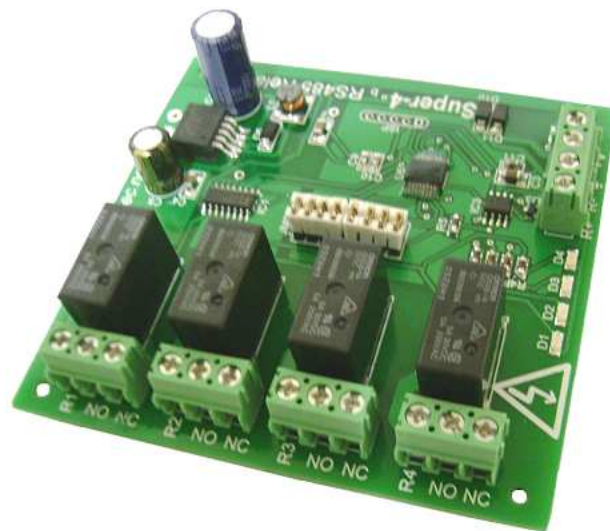


Super4 RS485 Relay Module

User Manual



Version 1.1

www.tctec.net

| | |
|---|-----------------|
| <u>PRODUCT DESCRIPTION.....</u> | <u>3</u> |
| <u>SYSTEM REQUIREMENTS.....</u> | <u>3</u> |
| <u>TERMINAL CONNECTIONS.....</u> | <u>3</u> |
| <u>SPECIFICATIONS.....</u> | <u>4</u> |
| <u>SOFTWARE.....</u> | <u>4</u> |
| <u>PHYSICAL DIMENSIONS.....</u> | <u>5</u> |

Product Description

The SUPER4 RS485 Module is a relay control board containing 4 mechanical SPDT (Single pole double throw) power relays.

The module accepts serial commands on a RS485 2 or 3 wire network.

System Requirements

The RS485 Master will work with most operating systems supported by the FTDI chip-set :

Windows 7, Windows 7 x64 ,Windows Server 2008 , Windows Server 2008 x64

Windows Vista,Windows Vista x64, Windows Server 2003,

Windows Server 2003 x64, Windows XP, Windows XP x64, Windows 2000

Windows ME , Windows 98, Linux, Mac OS X, Mac OS 9, Mac OS 8,

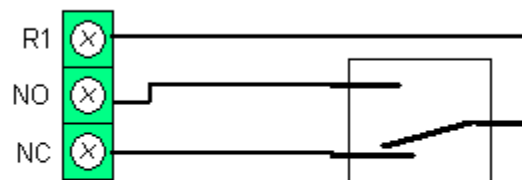
Windows CE.NET (Version 4.2 and greater)

Terminal Connections

V+ Supply positive
GND Supply ground
R+ Positive RS485 signal line
R- Negative RS485 signal line

R1 Relay 1 center pole connection
R2 Relay 2 center pole connection
R3 Relay3 center pole connection
R4 Relay4 center pole connection

NO Normally Open relay connection
NC Normally Closed relay connection



Specifications

| | |
|---|---------------------|
| Max current consumption at 12V | 160 mA |
| Supply | 10V dc to 25V dc |
| Communications protocol | 19200, 8, 1, None |
| Dimensions: | 86 mm x 92mm x 20mm |
| Relay Switching / Control speed: | 100mSec |
| Relay specifications: Omron G5SB-14-5DC | |
| 30VDC @ 5Amps, 250VAC @ 5Amps | |

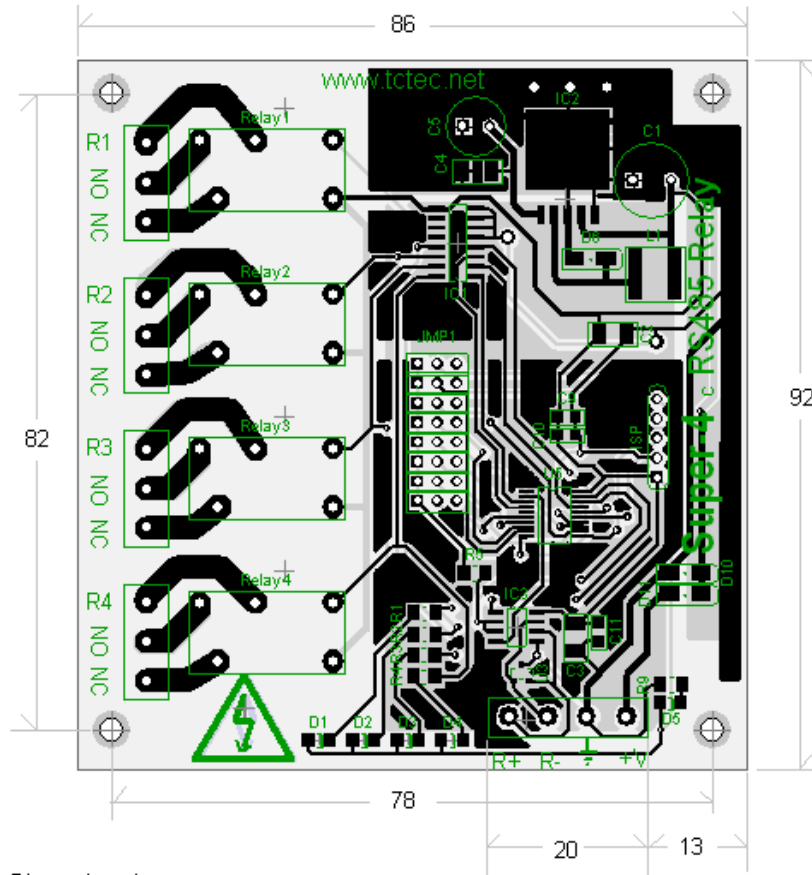
Software

Please check for the latest software from our website:

www.tctec.net

For communication commands see
RS485 command summary.pdf

Physical Dimensions



Disclaimer

This device should not be used in applications where failure may result in death or injury without proper consideration and design of associated system architecture and redundant safety features.

The manufacturer, tctec pty ltd accepts no responsibility for injury, death or loss caused by the use or misuse of this device.