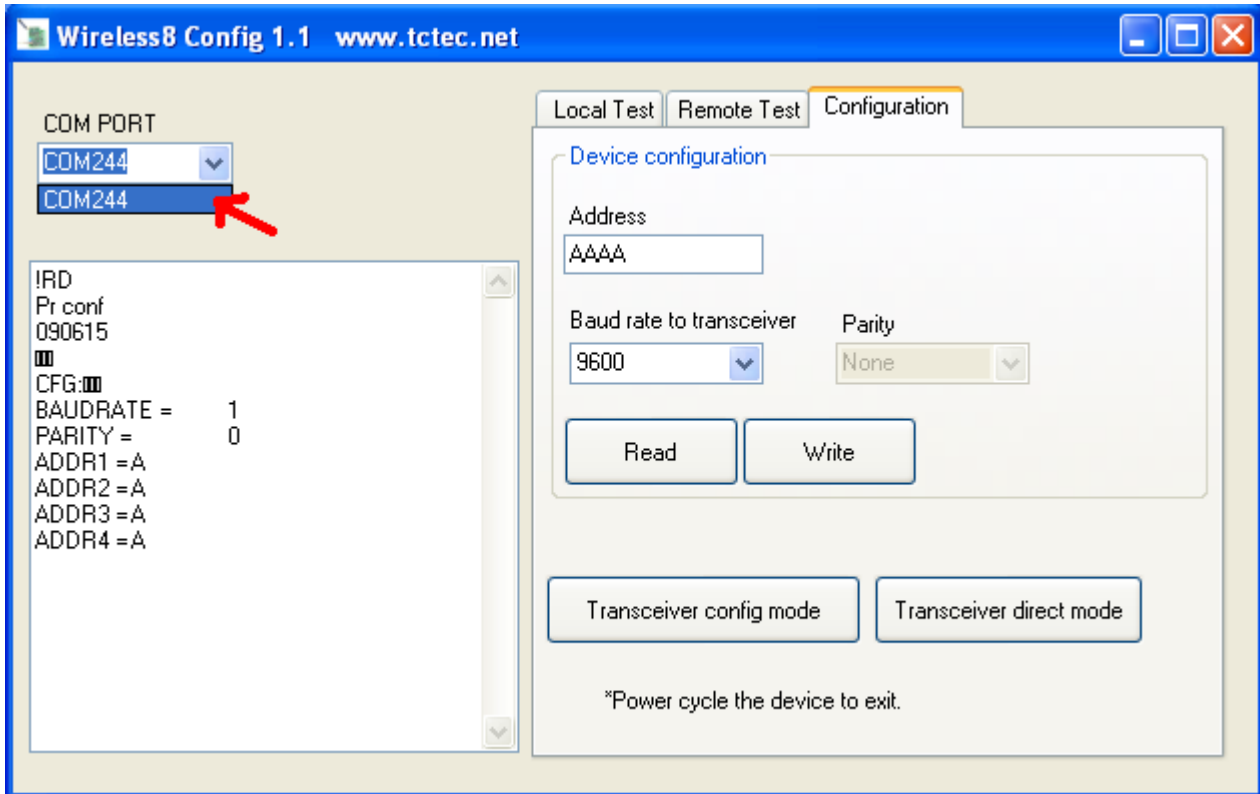
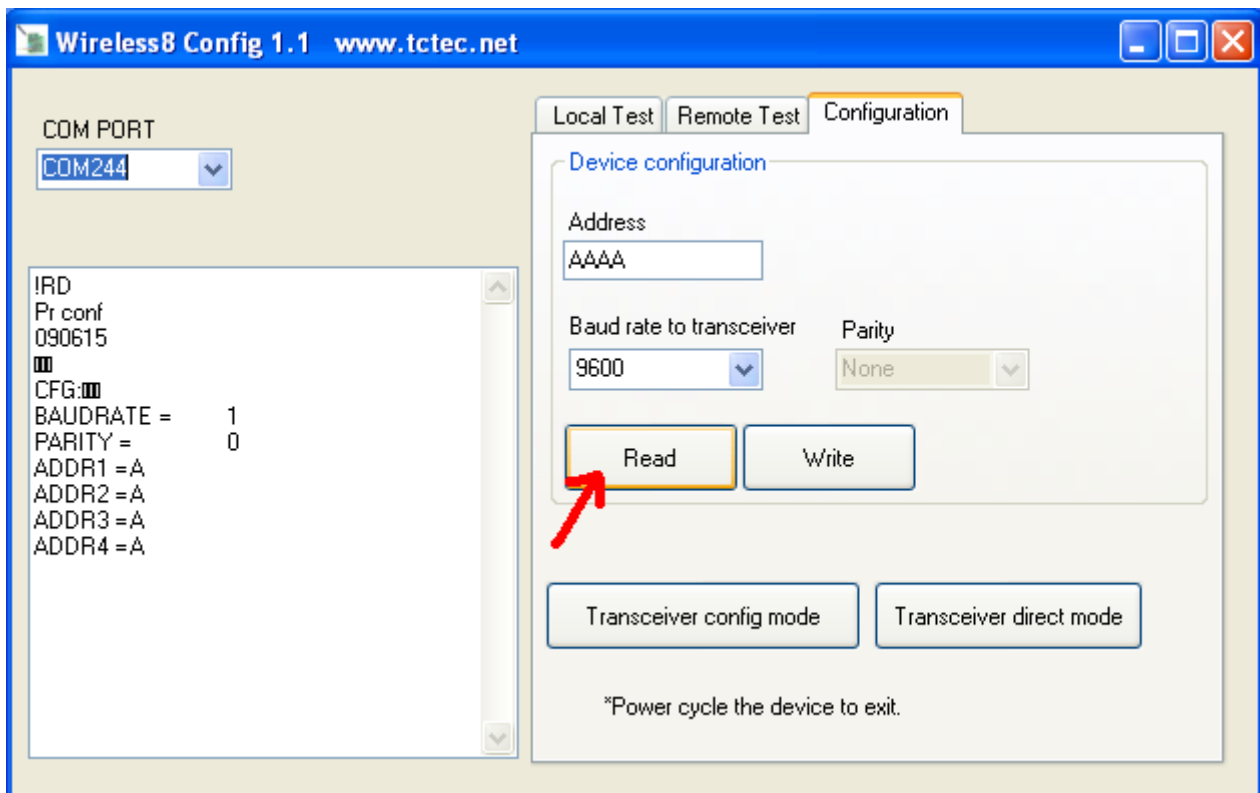


Changing the Wireless settings

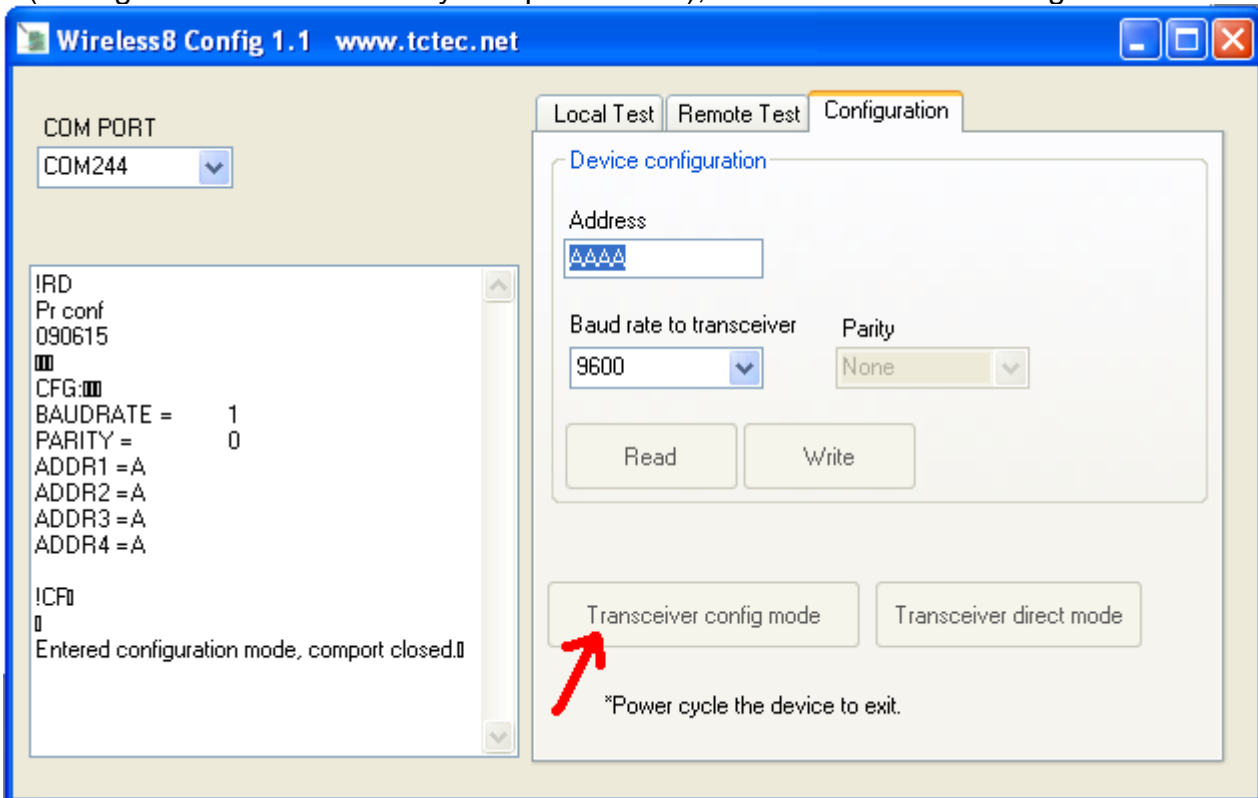
1. Plug the wireless8 into a USB port
2. Run Wireless8Config
3. Choose the correct Com port and connect to the Wireless8



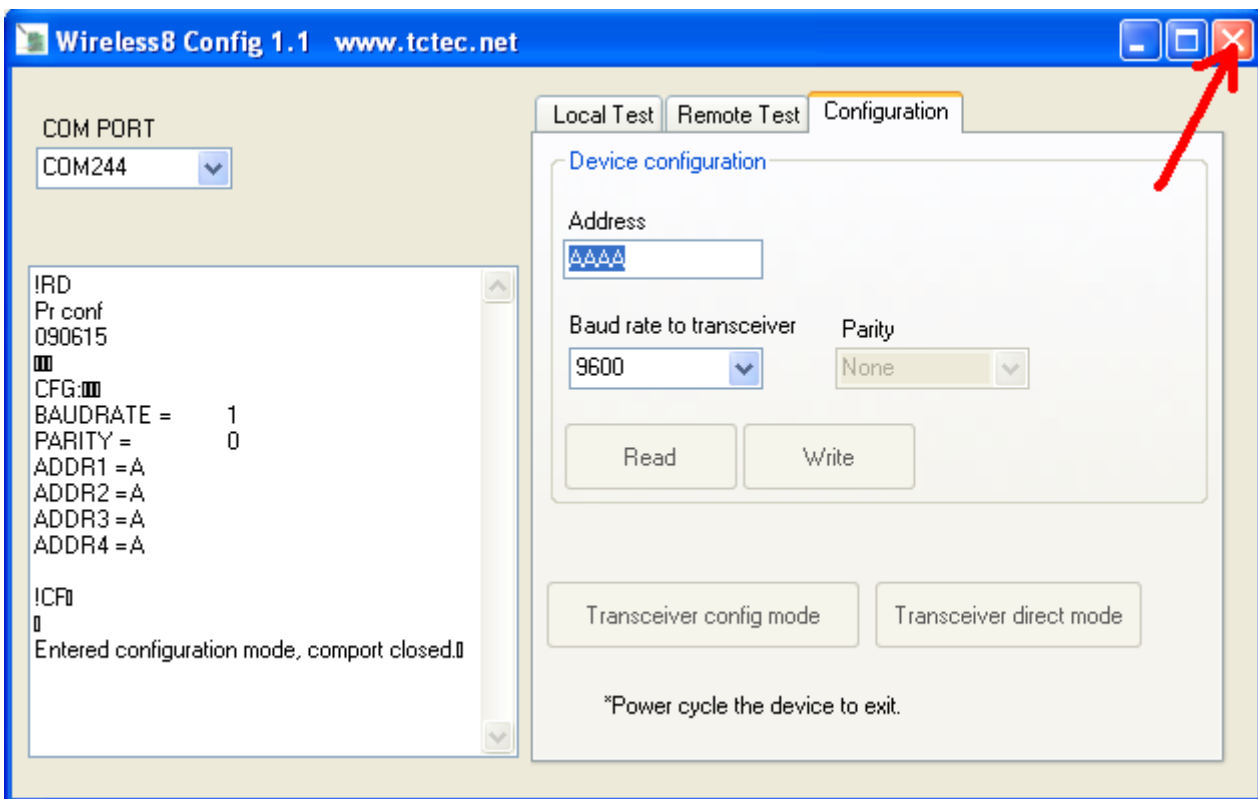
4. Read the settings from the Wireless8



5. (Change Address if necessary and press Write), Press Transceiver config mode.



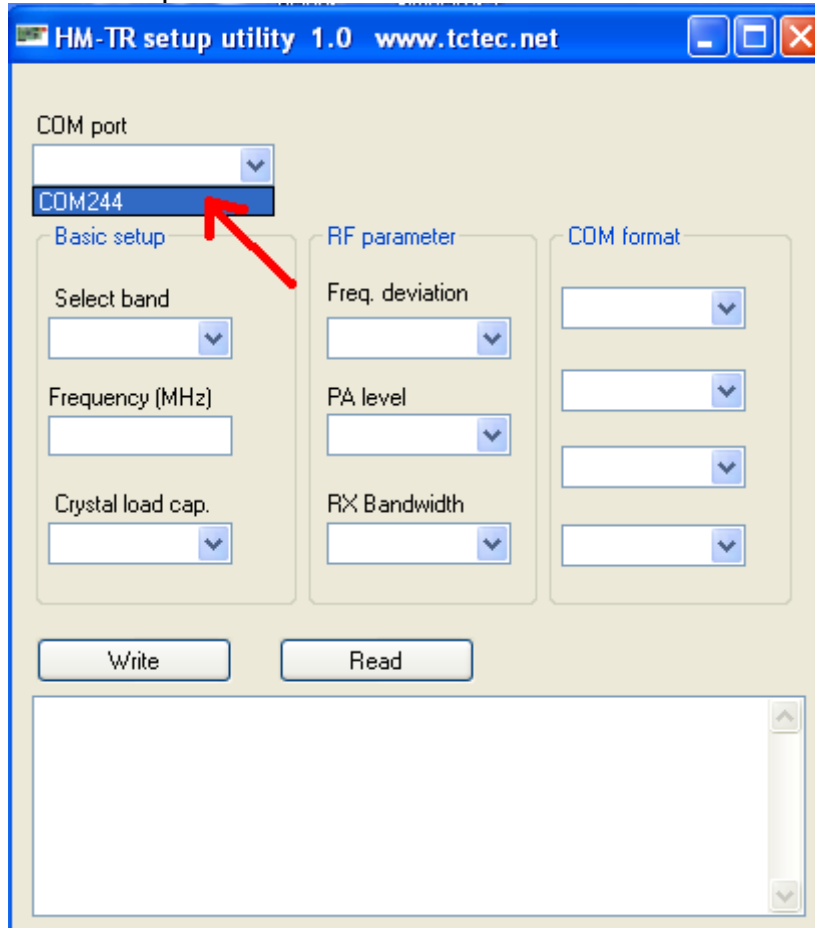
6. The Wireless Transceiver is now in config mode,(a RED Led will be ON) Close the Wireless8Config application.



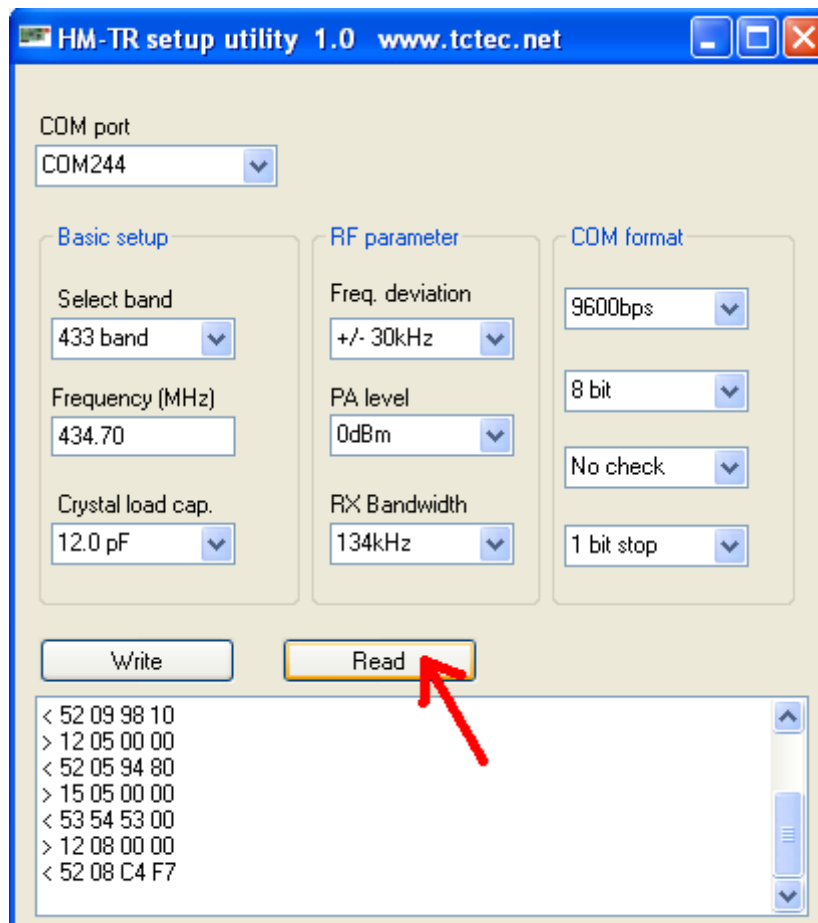
7. Run the HM-TR Setup Utility



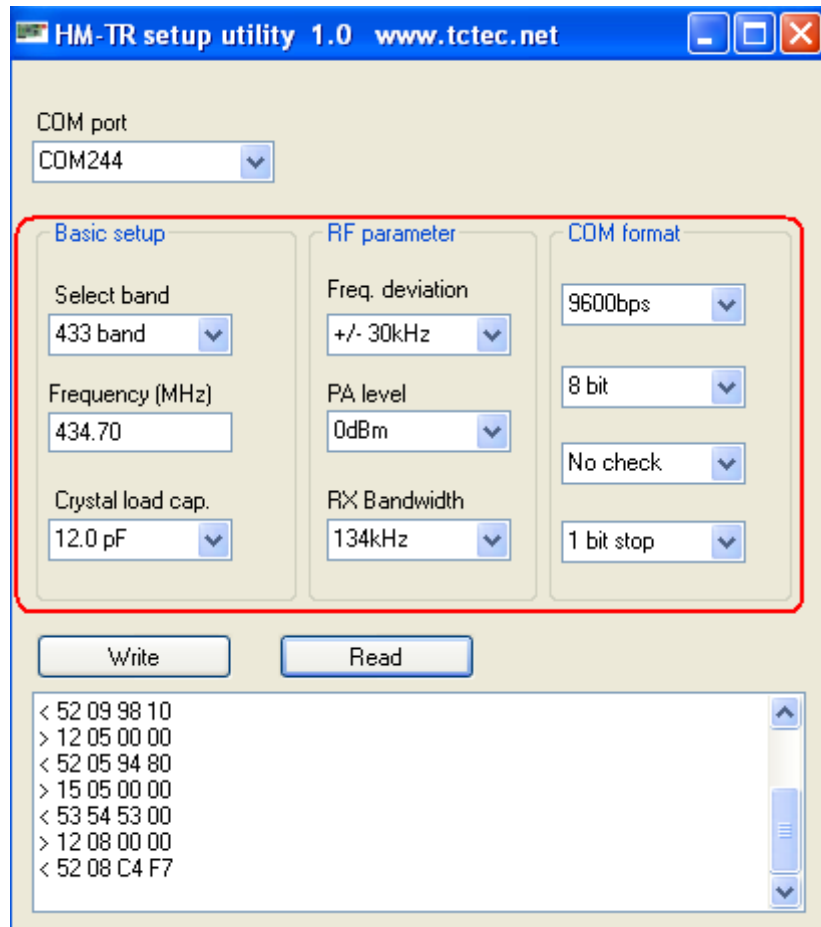
8. Select the correct COM port to connect to the Wireless8



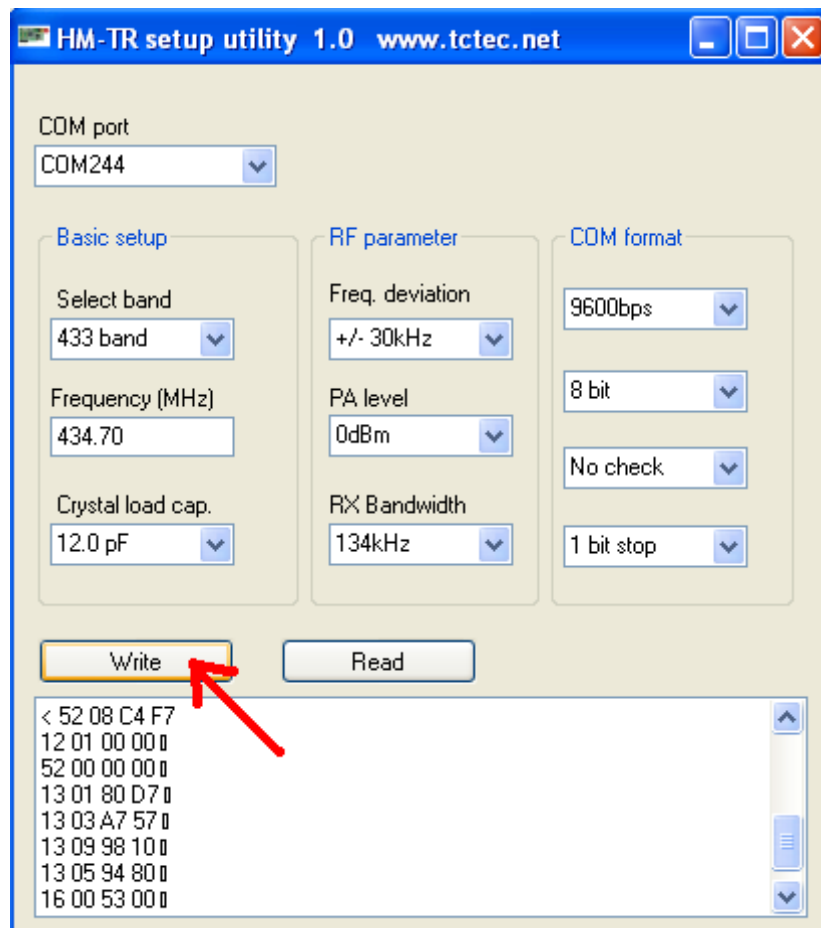
9. Read the Wireless transceiver settings:



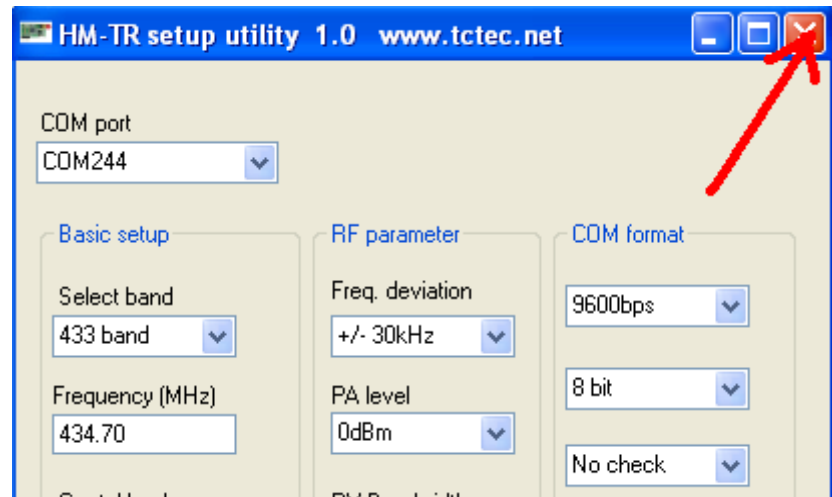
10. Ensure the settings are correct, or Use the default settings as shown below:



11. Write the Settings to the Wireless Transceiver



12. Close the HM-TR Setup utility.



13. Unplug the Wireless8 from the USB port and then plug it back in (to reset it)

The procedure is complete

The Wireless settings have been changed.

END.